

---

# RETAIL ZONES

---





**TATA HOUSING**

## TATA HOUSING

---

*International standards of design*

---

Tata Housing, one of India's leading real estate developers, is a closely held public limited company and a subsidiary of TATA Sons. It is the first corporate to pioneer the concept of real estate development in India. It is widely recognised for quality construction, ethical and transparent business practices, high standards of maintenance and timely delivery of properties. With a pan-India presence, Tata Housing has successfully demonstrated capabilities in construction, engineering, commercial/ IT Parks, housing and township development. It is known for international standards of design and green sustainable developments. Other retail projects by Tata Housing – Good Life - Boisar, Centrus - Kolkata & Highway Retail - Vasind.

## SG 18

---

*High quality craftsmanship*

---

SG 18 was founded with a vision of providing end-to-end solutions to companies and government institutions. SG 18 aims to provide high quality craftsmanship in the real estate and construction industry. Its main objective is to join hands with government and local partners in SAARC countries and exploring development opportunities.



# ABOUT MALÉ

---

## COMMERCIAL CAPITAL

*Real Estate : Safest Investment*

---

A vibrant capital buzzing with commercial activity, Malé is not just a city, it's the address of dreams and ambitions. That's just why, almost one third of the nation's population calls Malé its home. Malé island is the heart of all commercial activities in the country. This contributes to the central island being heavily urbanised. It is not just the commercial capital, it is a threshold to a bright and successful future.

Not just that, it is also the centre of administration and bureaucracy, making it the preferred choice for the short-term residents of Maldives, and Expats. Owing to the high opportunity, the demand for real estate in Malé is at an all time high and promises to continue growing in the years to come. Not surprisingly, real estate in Malé is always the safest and surest investment one can make, given the classy tastes and a fondness to retail and buying behaviour of Malé's residents.





## RETAIL IN MALÉ

---

## AMAZING VARIETY

---

*Higher demand for Retail*

---

Malé is rich in retail offerings and the delightful experiences that accompany it. With the amazing variety that's packed in, Malé has a retail culture that leaves you pondering for choices. Retail in Malé would typically occupy of the Ground and First Floor levels in the Residential development towers.

It comprises of a wide variety of categories like supermarkets, fashion apparel, footwear, accessories and electronics. With its diverse offerings and wide variety of choice, it's a one-stop destination for retail needs for locals and tourists alike.

ARABIYAA

MAJEEDHEE MAGU

---

HIGH STREET

---

*Retail Area 17886 sq.ft.*

---







ARABIYAA  
MAJEDHEE MAGU



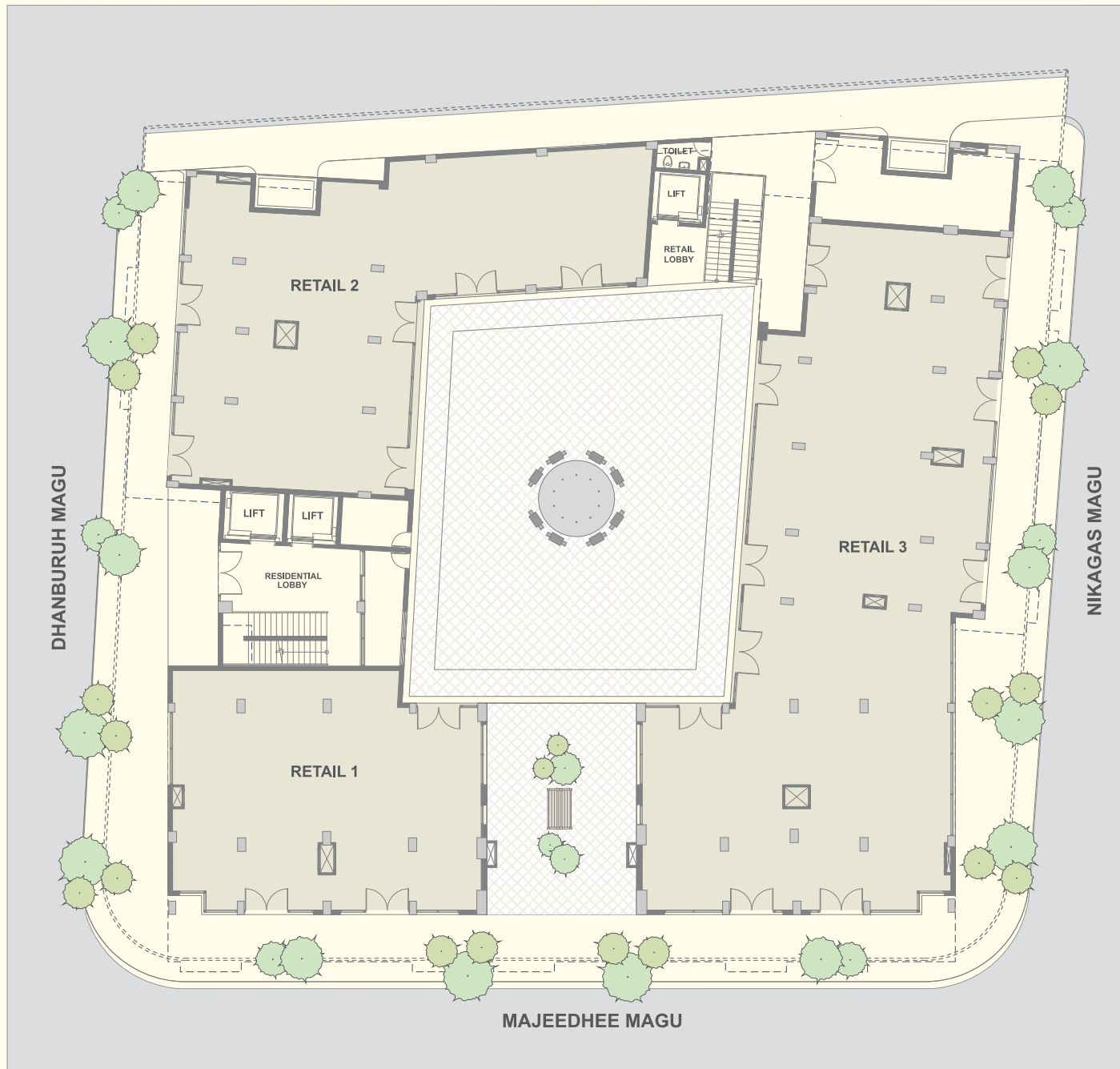
Located right at the centre of Majeedhee Magu, arguably the most prominent shopping street in Malé, a space in Arabiyaa ensures a steady stream of people from all walks of life. With an area of 17,886 sq.ft. and being located on the most promising stretch, it is a natural magnet for shoppers. In addition to having stores that open to the main street, Retail at Arabiyaa has stores that open up into a central courtyard that provides people with a beautifully landscaped seating area to spend time with their loved ones. Being spacious and sophisticated, people not only spend their money and time here, they invest it.



# ARABIYAA

GROUND FLOOR

Retail 1: 1610 sq.ft    Retail 2: 2362 sq.ft    Retail 3: 3805 sq.ft    Total Built-up Area: 7777 sq.ft



# ARABIYAA

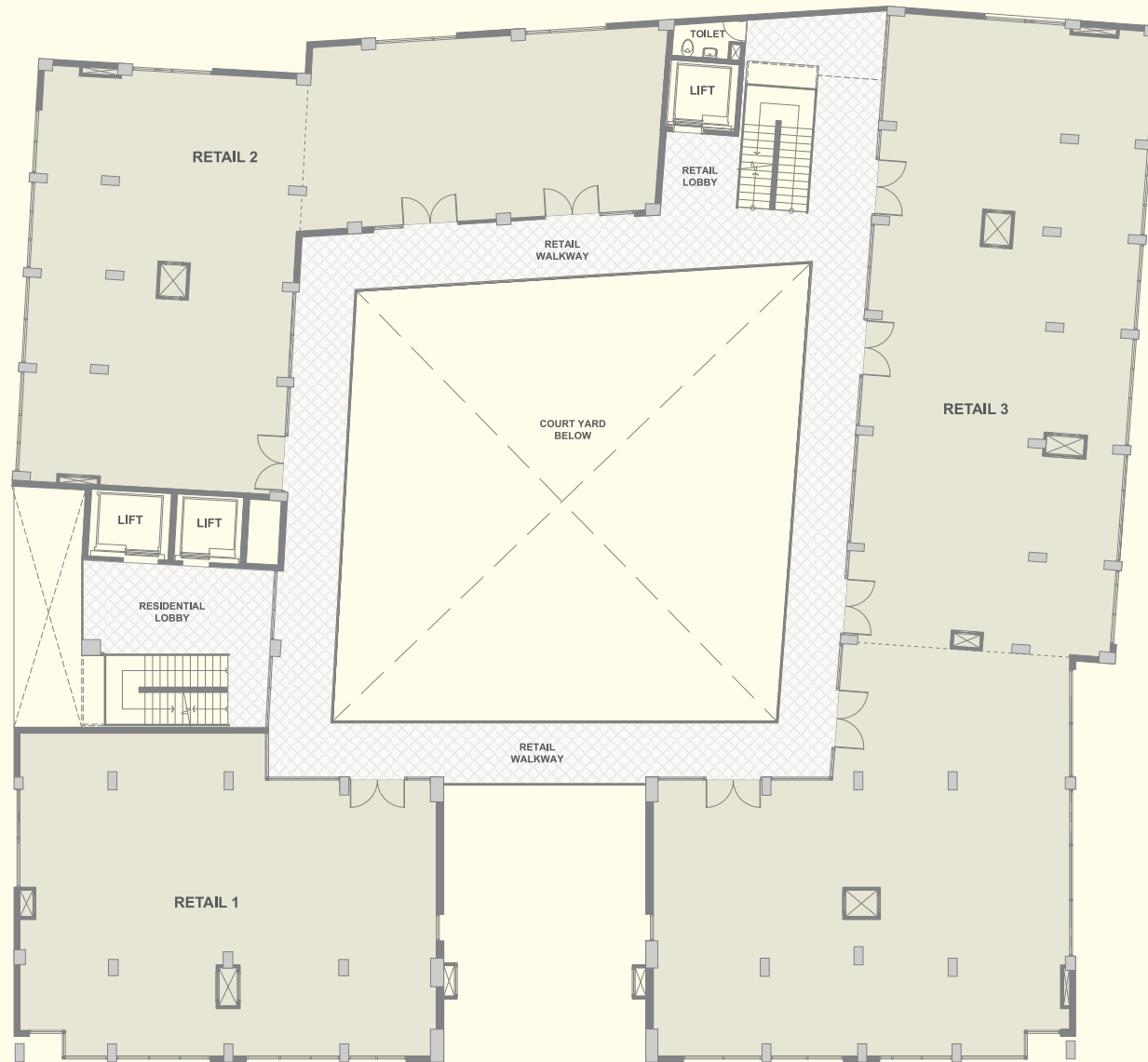
## MEZZANINE FLOOR

Retail 1: 1584 sq.ft

Retail 2: 2249 sq.ft

Retail 3: 3867 sq.ft

Total Built-up Area: 7700 sq.ft



**GAKOSHI**

AMEENEE MAGU

---

**SHEER SIZE**

---

*Retail Area 41474 sq.ft.*

---







**GAKOSHI**  
AMEENEE MAGU



Located at Ameenee Magu adjacent to the Television Tower, Gakoshi is indeed very close to the heart of the action. Not to mention, it is surrounded with educational institutions like Giyasuddin International School, Imaadhudeen School and colleges like Maldives Polytechnic & Mandhu College – all institutes of great repute. It's no secret that a space spread of 41,474 sq.ft. in proximity to key locations is not just rare, it's a treasure trove of opportunity. With a dense residential population, it is a one-of-its-kind shopping destination in Malé. The sheer size, the experience it delivers, and the convenience it offers makes it the ideal shopping destination for shoppers, investors or just about anyone looking to invest in a good time.



# GAKOSHI

GROUND FLOOR

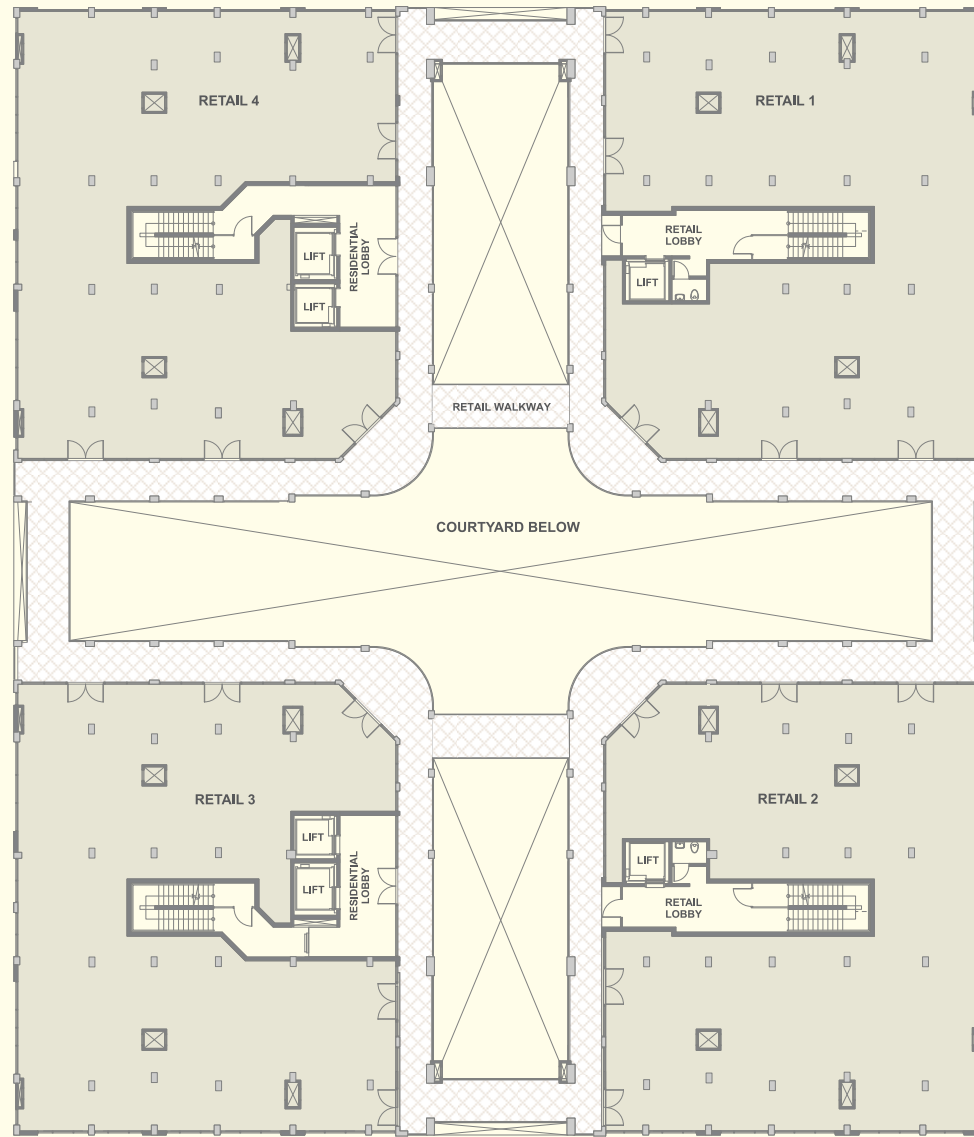
Retail 1: 4943 sq.ft Retail 2: 4949 sq.ft Retail 3A: 1956 sq.ft Retail 3B: 2254 sq.ft Retail 4A: 2254 sq.ft Retail 4B: 1958 sq.ft Total Built-up Area: 18314 sq.ft



# GAKOSHI

MEZZANINE FLOOR

Retail 1: 4341 sq.ft    Retail 2: 4316 sq.ft    Retail 3: 4107 sq.ft    Retail 4: 4107 sq.ft    Total Built-up Area: 16871 sq.ft









## SPECIFICATIONS

---

*Meticulous and thoughtful in design*

---

Screed finished flooring lays itself out before you while emulsion walls surround you; the retail zones are meticulous and thoughtful in its design. From toughened thick glass doors to modular switches and sockets, the architecture lays thorough focus on details, aesthetics and functionality, all the same.

**Flooring** : Screed Finish

**Walls** : Emulsion Paint

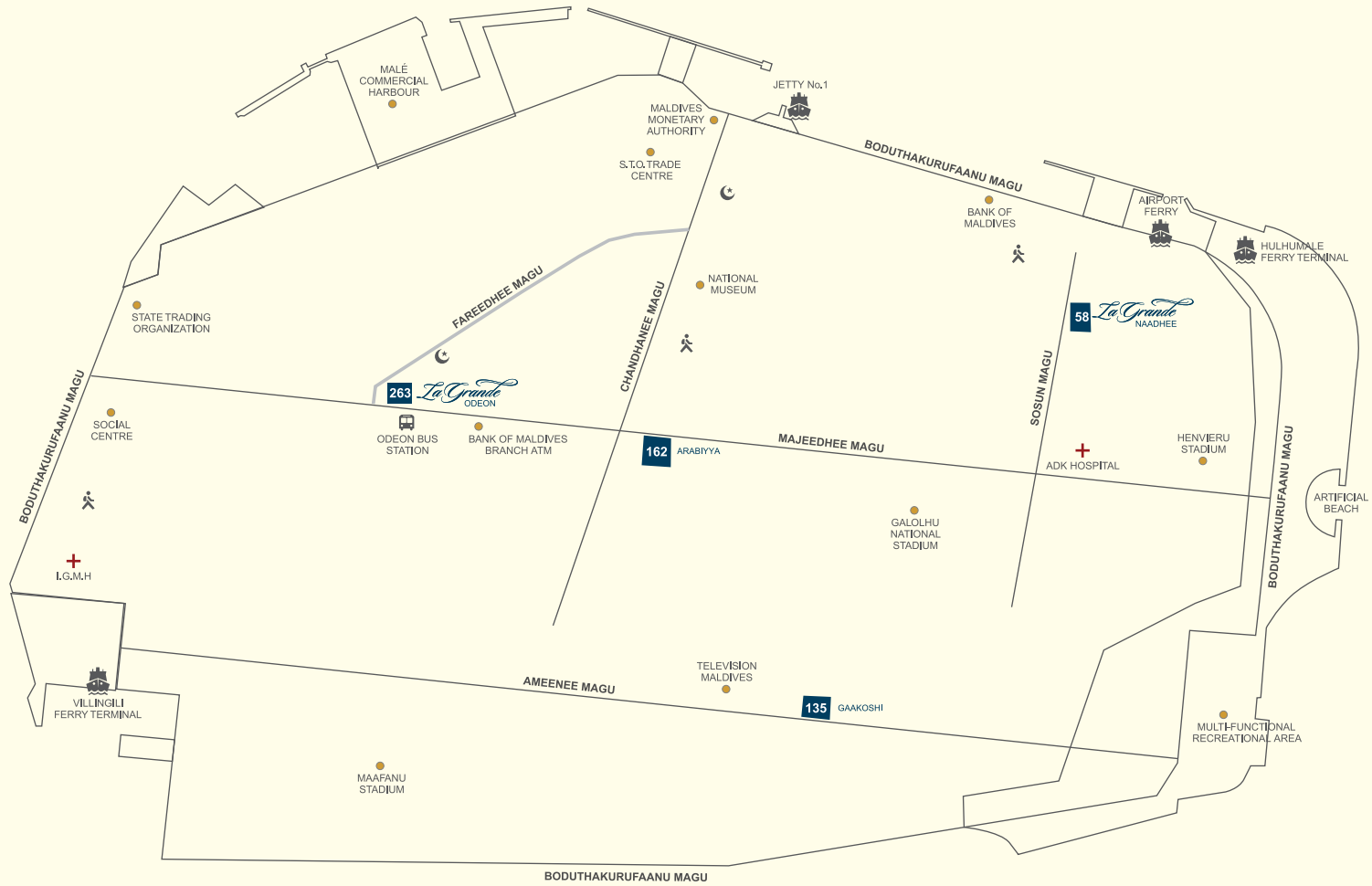
**Doors** : Toughened fixed glass & 180 degree swing door with floor spring.

**Fitting & Fixtures** : Only Electrical & Drain provision for VRV indoor & outdoor units. Legrand Modular switch / sockets.

## LOCATION MAP

*Malé city map - Apex site locations*

Each retail zone is a bustling shopping paradise, spread across the busiest streets of Malé. Be it Arabiyaa, which is right at the centre of Majeedhee Magu, or Odeon, situated on its western end. While Gakoshi is standing adjacent to the Television tower at Ameenee Magu, Naadhee is close to the Airport Jetty, north of Sosun Magu. All in all, every zone is right in the heart of convenience and action.



MAP NOT TO SCALE



