
RETAIL ZONES



TATA HOUSING

TATA HOUSING

International standards of design

Tata Housing, one of India's leading real estate developers, is a closely held public limited company and a subsidiary of TATA Sons. It is the first corporate to pioneer the concept of real estate development in India. It is widely recognised for quality construction, ethical and transparent business practices, high standards of maintenance and timely delivery of properties. With a pan-India presence, Tata Housing has successfully demonstrated capabilities in construction, engineering, commercial/ IT Parks, housing and township development. It is known for international standards of design and green sustainable developments. Other retail projects by Tata Housing – Good Life - Boisar, Centrus - Kolkata & Highway Retail - Vasind.

SG 18

High quality craftsmanship

SG 18 was founded with a vision of providing end-to-end solutions to companies and government institutions. SG 18 aims to provide high quality craftsmanship in the real estate and construction industry. Its main objective is to join hands with government and local partners in SAARC countries and exploring development opportunities.



ABOUT MALÉ

COMMERCIAL CAPITAL

Real Estate : Safest Investment

A vibrant capital buzzing with commercial activity, Malé is not just a city, it's the address of dreams and ambitions. That's just why, almost one third of the nation's population calls Malé its home. Malé island is the heart of all commercial activities in the country. This contributes to the central island being heavily urbanised. It is not just the commercial capital, it is a threshold to a bright and successful future.

Not just that, it is also the centre of administration and bureaucracy, making it the preferred choice for the short-term residents of Maldives, and Expats. Owing to the high opportunity, the demand for real estate in Malé is at an all time high and promises to continue growing in the years to come. Not surprisingly, real estate in Malé is always the safest and surest investment one can make, given the classy tastes and a fondness to retail and buying behaviour of Malé's residents.



RETAIL IN MALÉ

AMAZING VARIETY

Higher demand for Retail

Malé is rich in retail offerings and the delightful experiences that accompany it. With the amazing variety that's packed in, Malé has a retail culture that leaves you pondering for choices. Retail in Malé would typically occupy of the Ground and First Floor levels in the Residential development towers.

It comprises of a wide variety of categories like supermarkets, fashion apparel, footwear, accessories and electronics. With its diverse offerings and wide variety of choice, it's a one-stop destination for retail needs for locals and tourists alike.

ODEON

FANDIYAARU MAGU

THE FRONTAGE

Retail Area 12720 sq.ft.



ODEON
FANDIYAARU MAGU



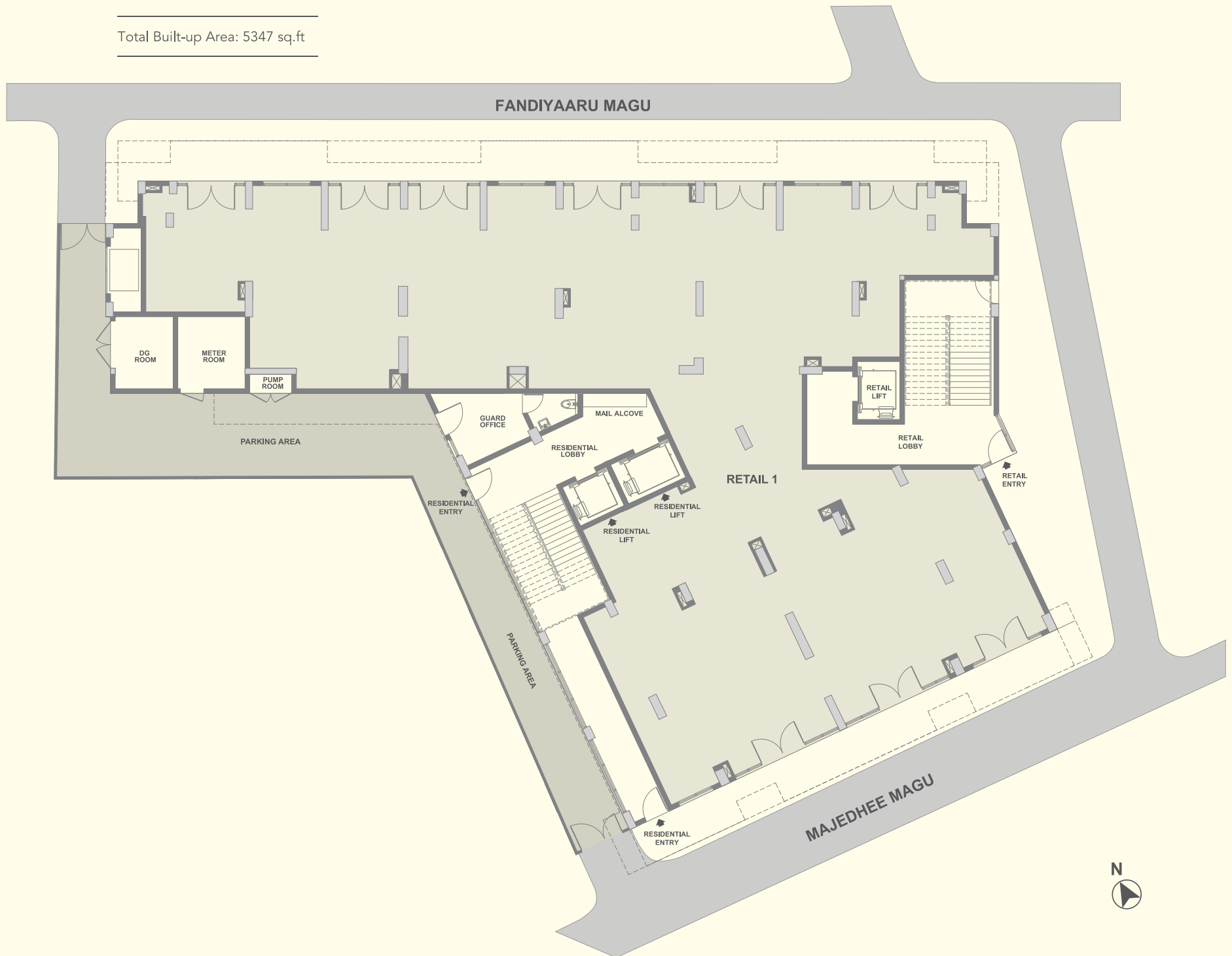
Located on the busy, bustling shopping paradise of Majeedhee Magu, Odeon is located on the western end of the street. With an angular layout it offers the best front views allowing ample display space, to generate eyeballs and attract visits, all the same. The layout of the plot further helps to have great frontage for retail on 2 sides, i.e. Majeedhee Magu & Fandiyaaru Magu. Spread over 12,720 sq.ft. and being a part of the premium residential development of Apex Realty, it promises to attract attention because of its sheer convenience too.



ODEON

GROUND FLOOR

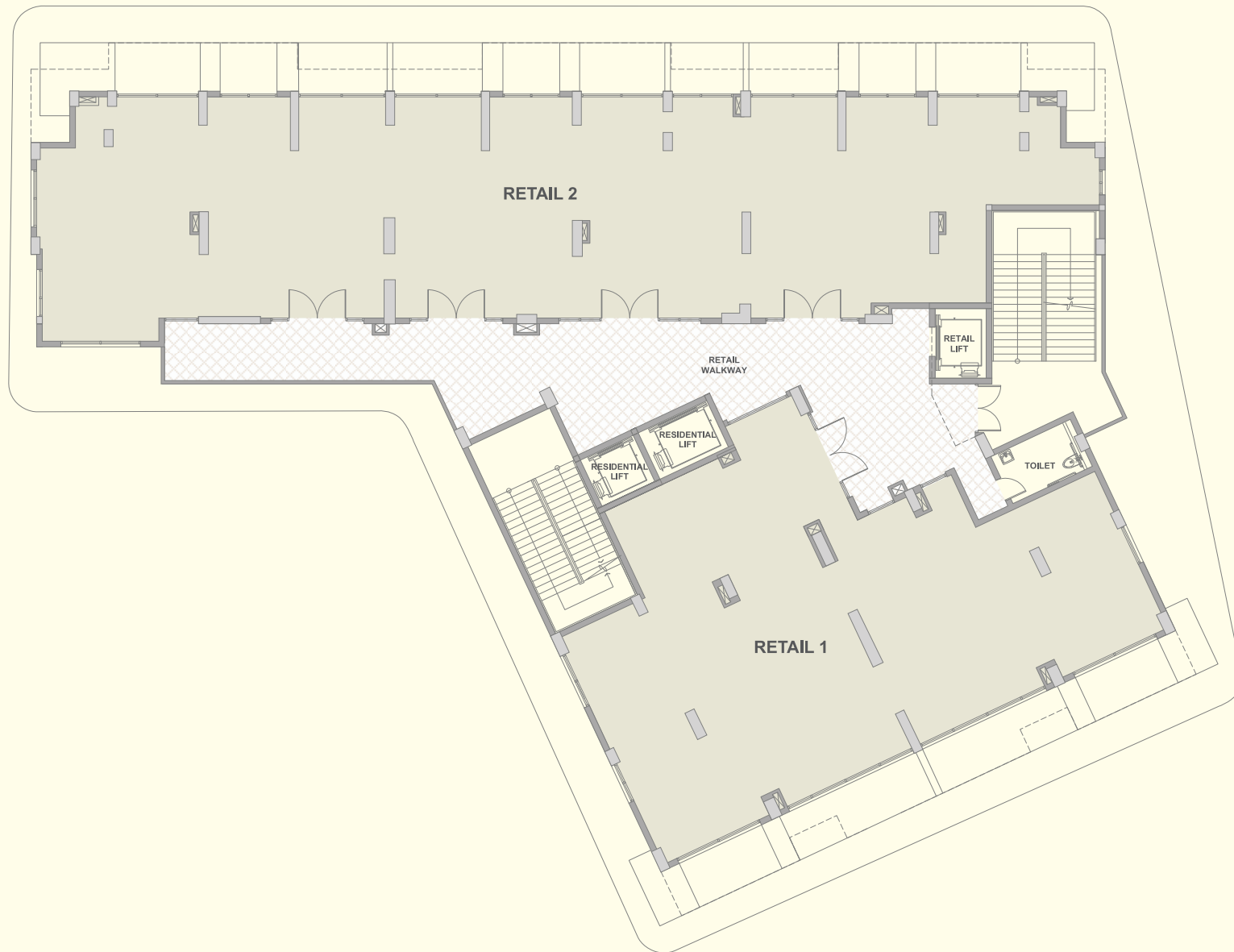
Total Built-up Area: 5347 sq.ft



ODEON

MEZZANINE FLOOR

Retail 1: 2192 sq.ft Retail 2: 3100 sq.ft Total Built-up Area: 5292 sq.ft



NAADHEE

SOSUN MAGU

COMMERCIAL CONNECT

Retail Area 25070 sq.ft.



NAADHEE
SOSUN MAGU



Located North of Sosun Magu and close to the Airport Jetty, Naadhee is a runway to retail dreams. Surrounded by major commercial developments, this 25,070 sq.ft. of retail haven is the nucleus of commerce. From banks, to the Ministry of Tourism to the Parliament Building – the site is in the midst of Malé’s most important and significant structures. Being a stone’s throw away from prestigious buildings and institutions that shape the future of Malé, it’s the perfect setting for a retail paradise that will touch lives and provide experiences to residents of Malé like never before.



NAADHEE

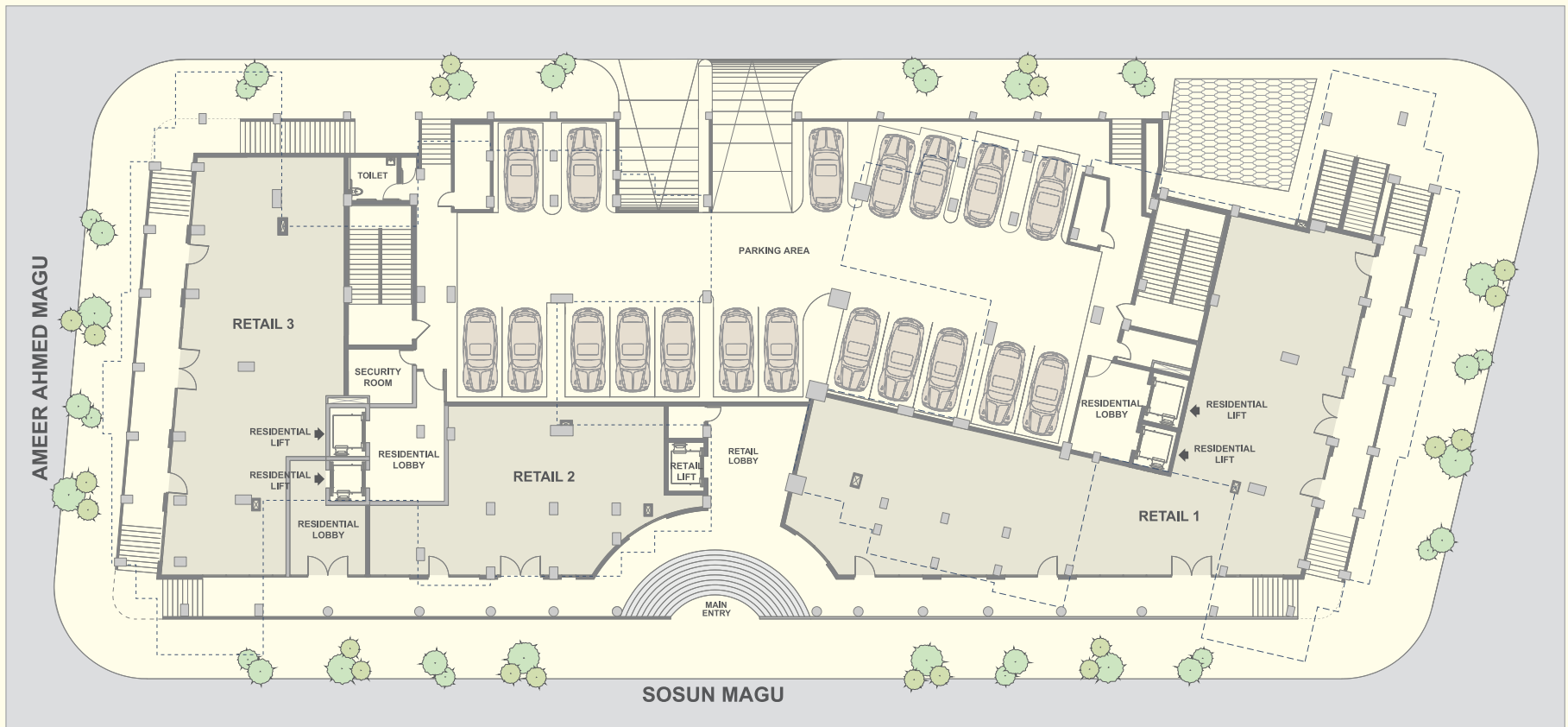
GROUND FLOOR

Retail 1: 2962 sq.ft

Retail 2: 1216 sq.ft

Retail 3: 1816 sq.ft

Total Built-up Area: 5994 sq.ft



NAADHEE

MEZZANINE FLOOR

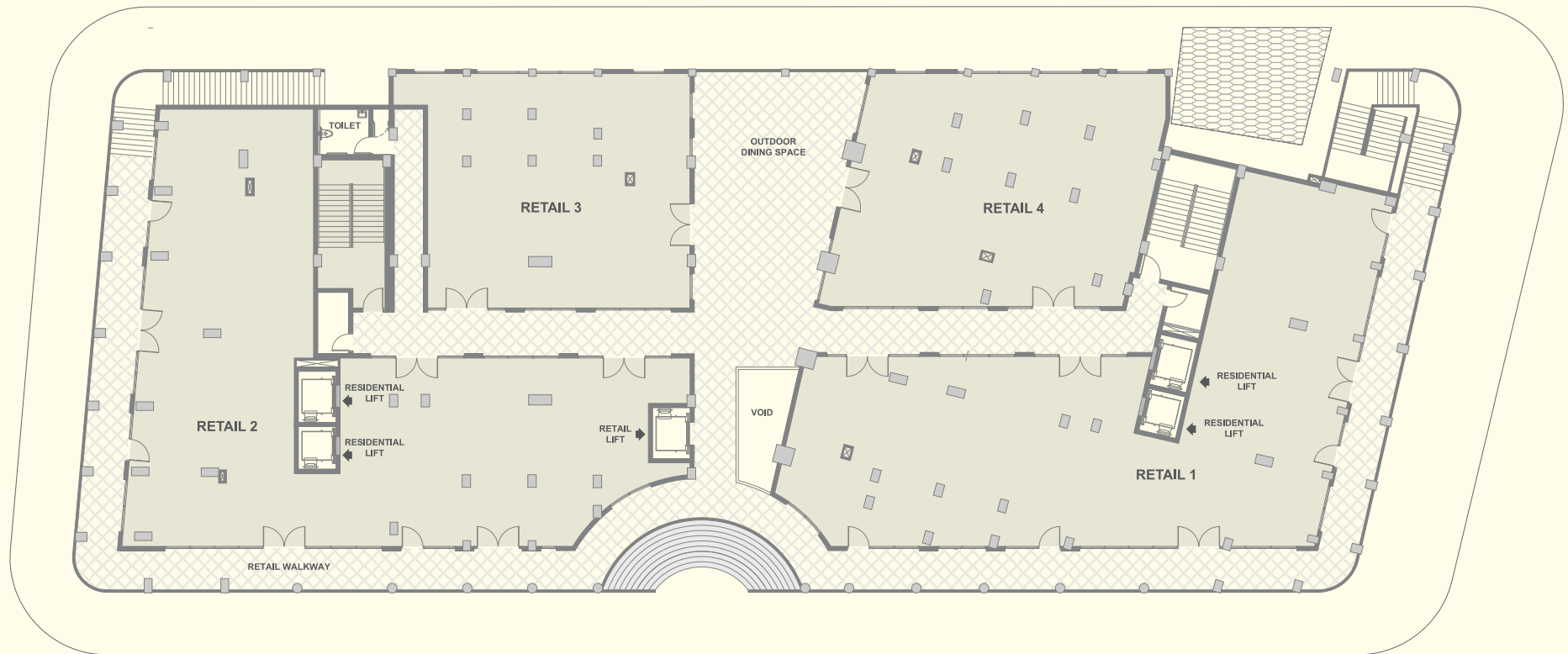
Retail 1: 3299 sq.ft

Retail 2: 3529 sq.ft

Retail 3: 1661 sq.ft

Retail 4: 1864 sq.ft

Total Built-up Area: 10353 sq.ft





SPECIFICATIONS

Meticulous and thoughtful in design

Screed finished flooring lays itself out before you while emulsion walls surround you; the retail zones are meticulous and thoughtful in its design. From toughened thick glass doors to modular switches and sockets, the architecture lays thorough focus on details, aesthetics and functionality, all the same.

Flooring : Screed Finish

Walls : Emulsion Paint

Doors : Toughened fixed glass & 180 degree swing door with floor spring.

Fitting & Fixtures : Only Electrical & Drain provision for VRV indoor & outdoor units. Legrand Modular switch / sockets.

