





## TATA HOUSING

---

Tata Housing, one of India's leading real estate developers, is a closely held public limited company and a subsidiary of TATA Sons. It is the first corporate to pioneer the concept of real estate development in India. It is widely recognized for quality construction, ethical and transparent business practices, high standards of maintenance and timely delivery of properties. With a pan-India presence, Tata Housing has successfully demonstrated capabilities in Construction, Engineering, Commercial / IT Parks, Housing and Township Development. It is known for international standards of design and green sustainable developments.

## SG 18

SG 18 was established with a vision of providing end-to-end solutions to companies and government institutions. SG 18 aims to provide high quality craftsmanship in the real estate and construction industry. Its main objective is to join hands with government and local partners in SAARC countries and explore development opportunities.

---







*Submerge*



## INFINITY POOL

Rise above the clutter and chaos of the city as you sit above the world so high. Float with your dreams in our infinity pool on the rooftop as your thoughts stretch out all the way to the horizon. Enjoy an unhurried, relaxed time under the sun as you submerge yourself in a stunning view laid out before your eyes. Watch your kids enjoy in a special kid's pool that lets them dip, splash and have a merry time. Experience togetherness like never before.

*Indulge*





## GYMNASIUM | SAUNA | JACUZZI

Catch up with your health as you put the thump back into your heart in our state-of-the-art gymnasium. Lined with the latest and best equipment, it's the best place to work out. And once you're done sweating it out, you can ease your muscles and mind in the Jacuzzi or enjoy bliss with a steam bath. Pamper yourself, please all your senses as you start a journey towards rejuvenation and repose & refresh yourself in every way possible.





*Connect*





## WI-FI LOUNGE | POOL TABLE

Spend a casual evening with friends and family as you indulge in a game of pool or surf the internet as you entertain them at the Wi-Fi lounge. Stay connected and in close touch with your loved ones, wherever they are in the world. Make our lounge your pad to build new friendships and rekindle old ones.

*Convenience*



EMPORIO ARMANI

BB  
BALENCIAGA

RALPH LAUREN





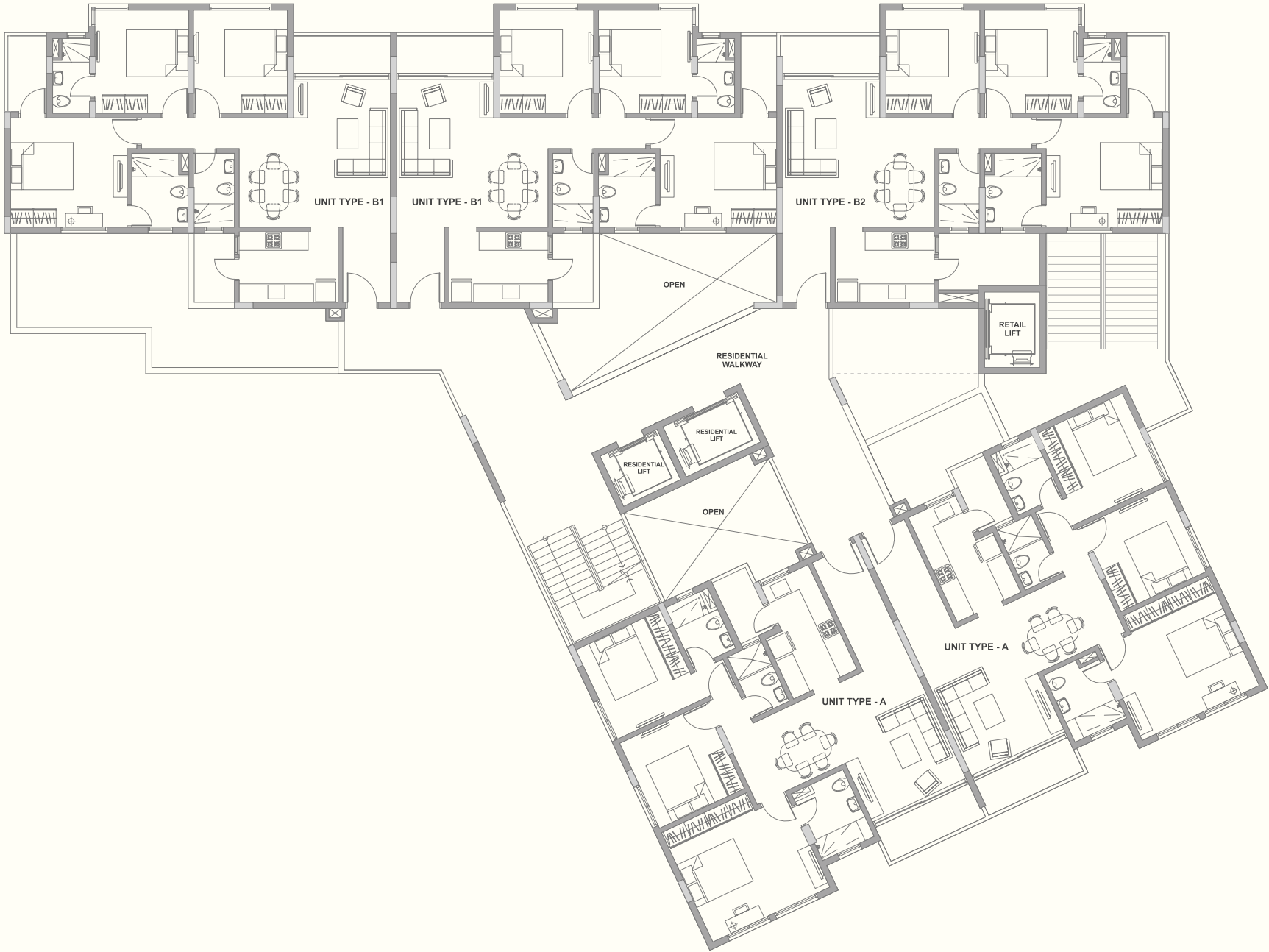
## RETAIL

Indulge in retail therapy as we provide a host of brands at your doorstep for you to shop, gift and please your loved ones. Choose from a variety of top-notch brands, browse through supermarkets that have everything you need and want, make life convenient and stylish.

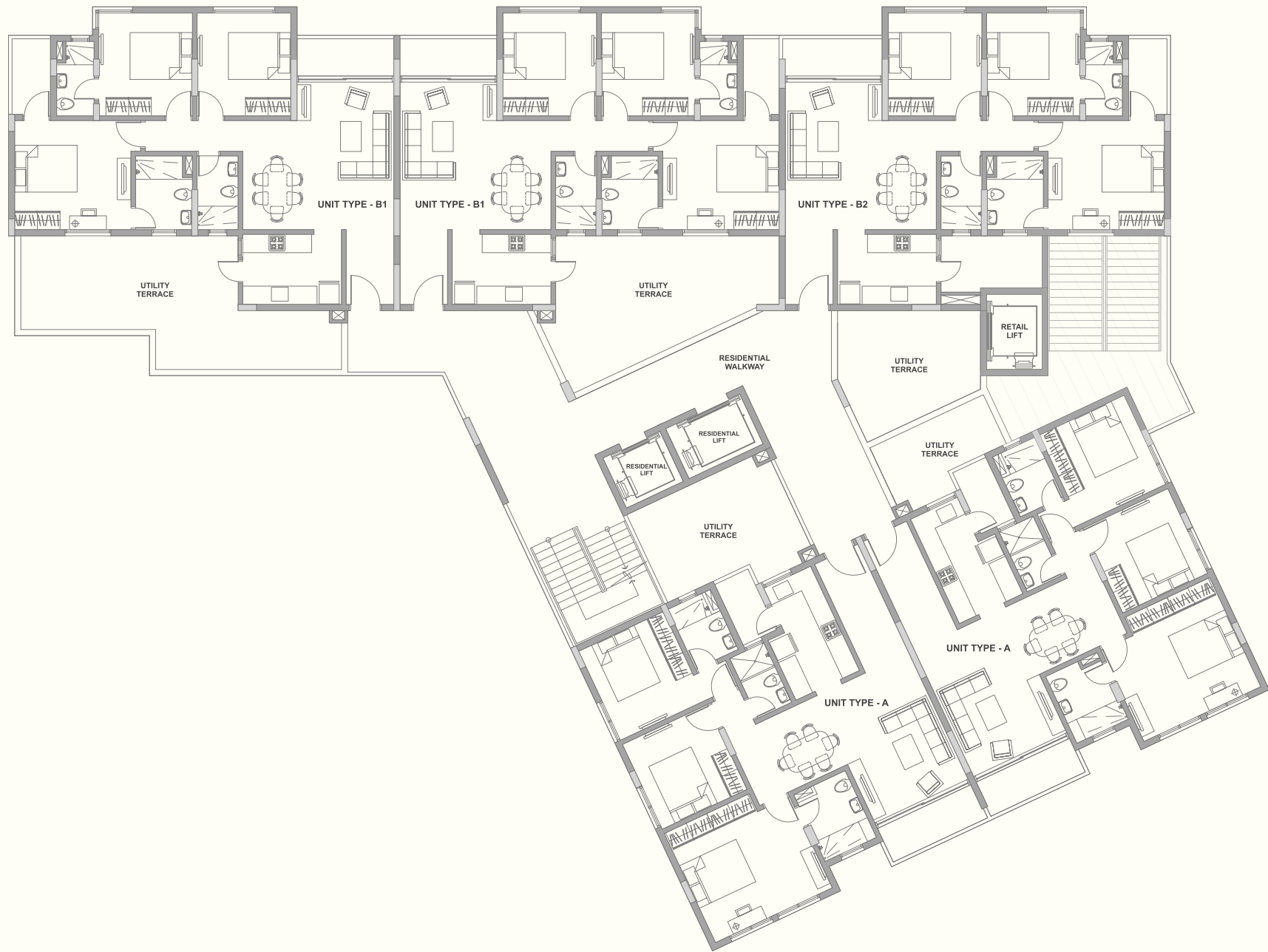




TYPICAL FLOOR

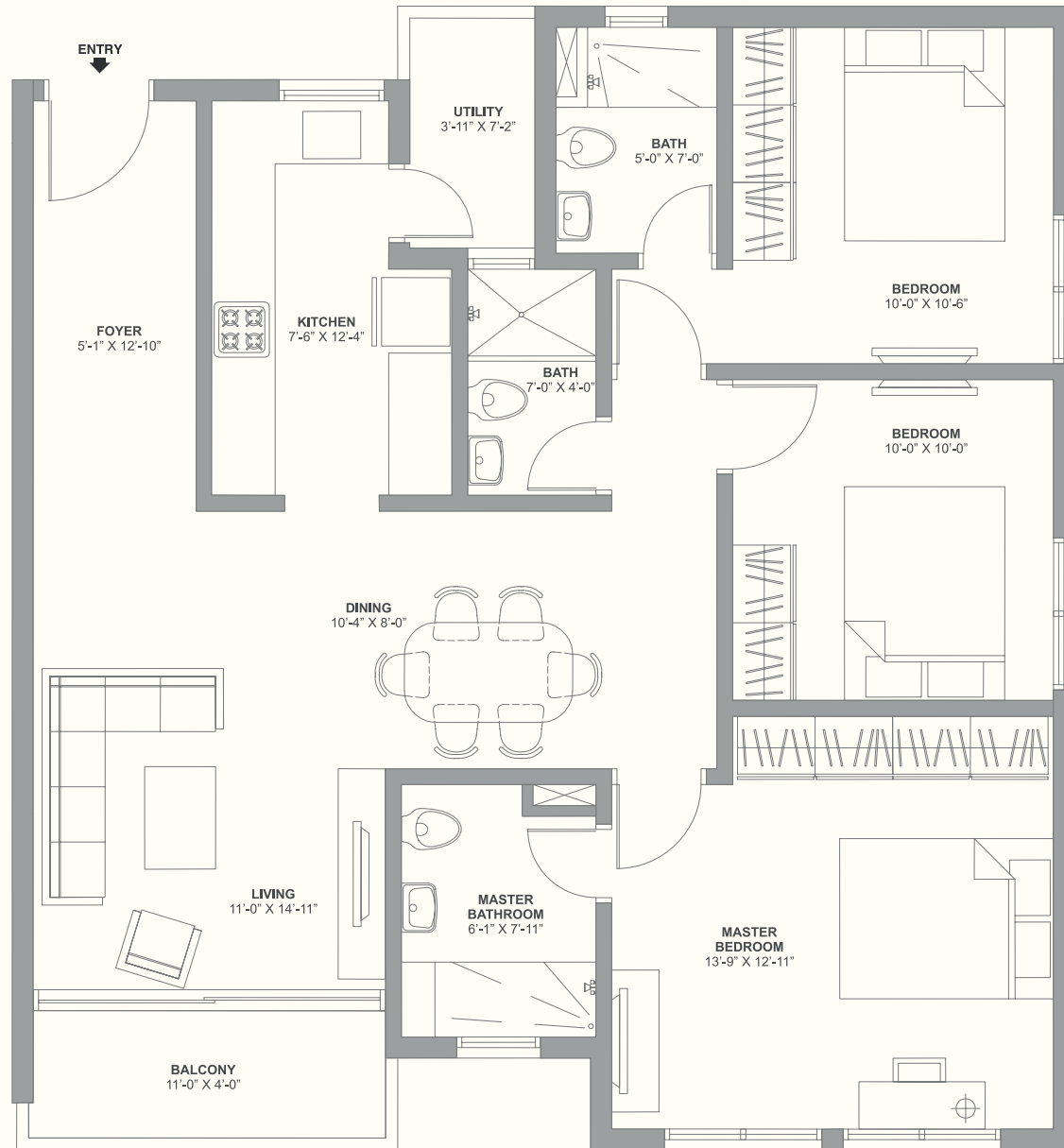


# FIRST FLOOR

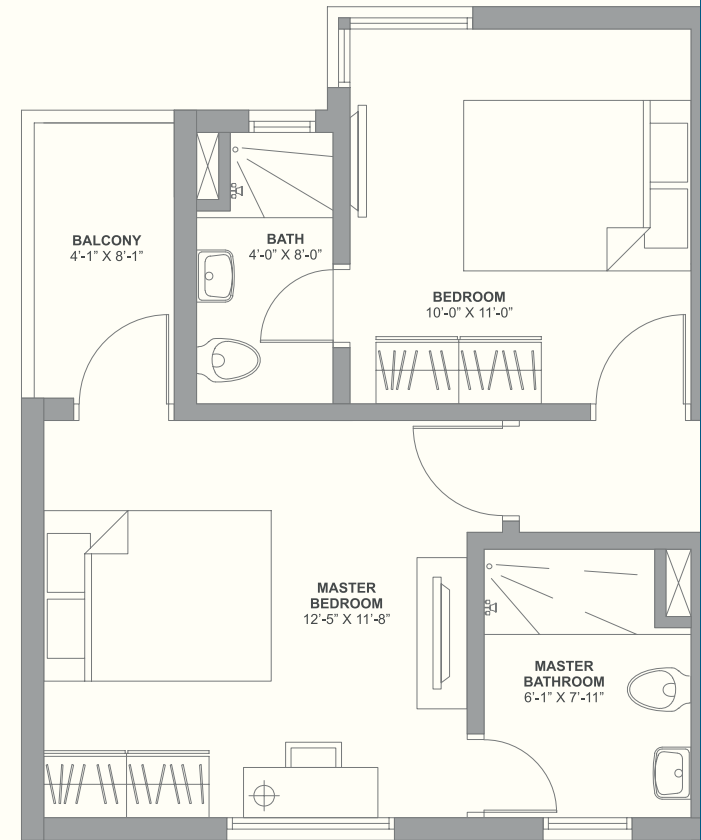




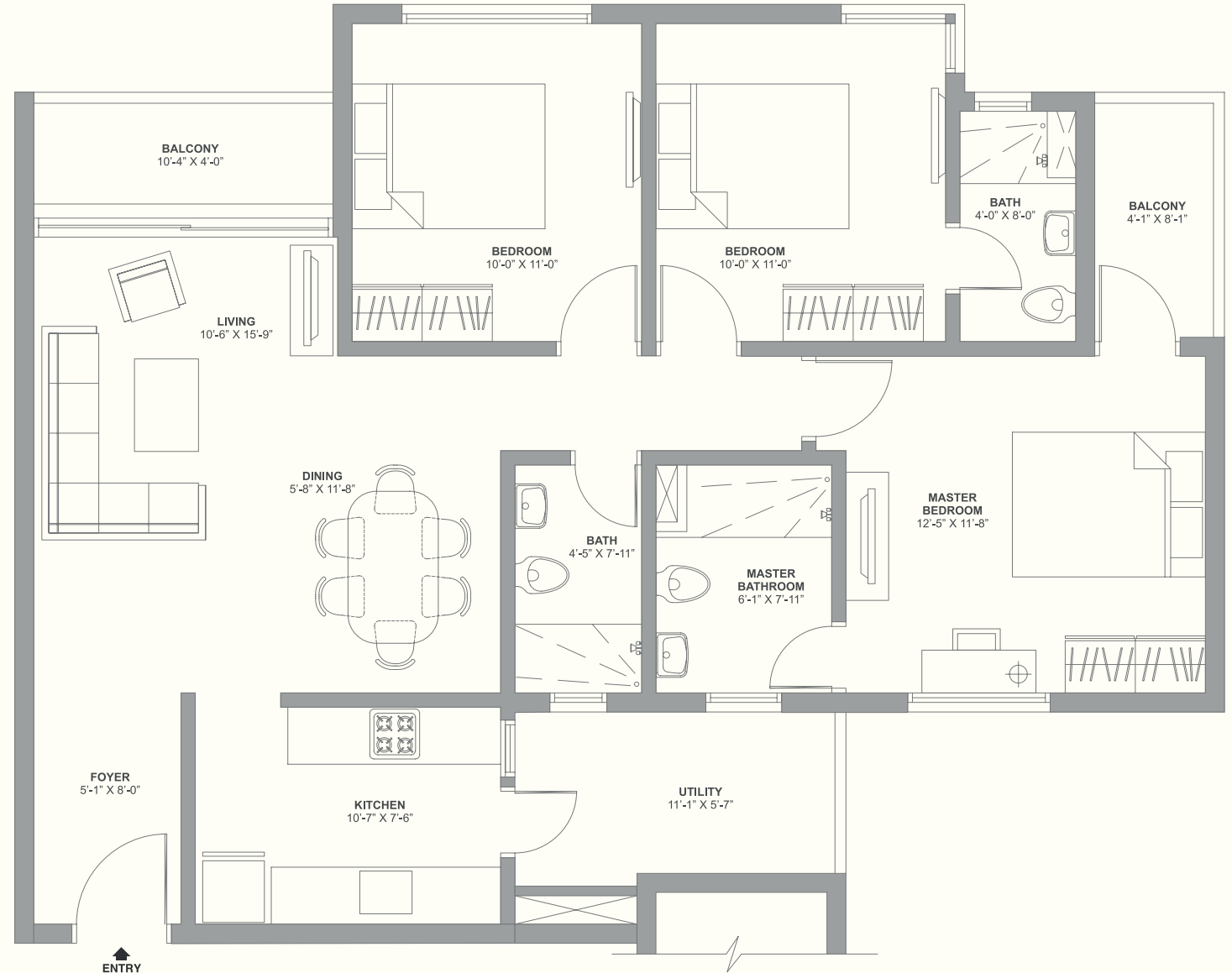
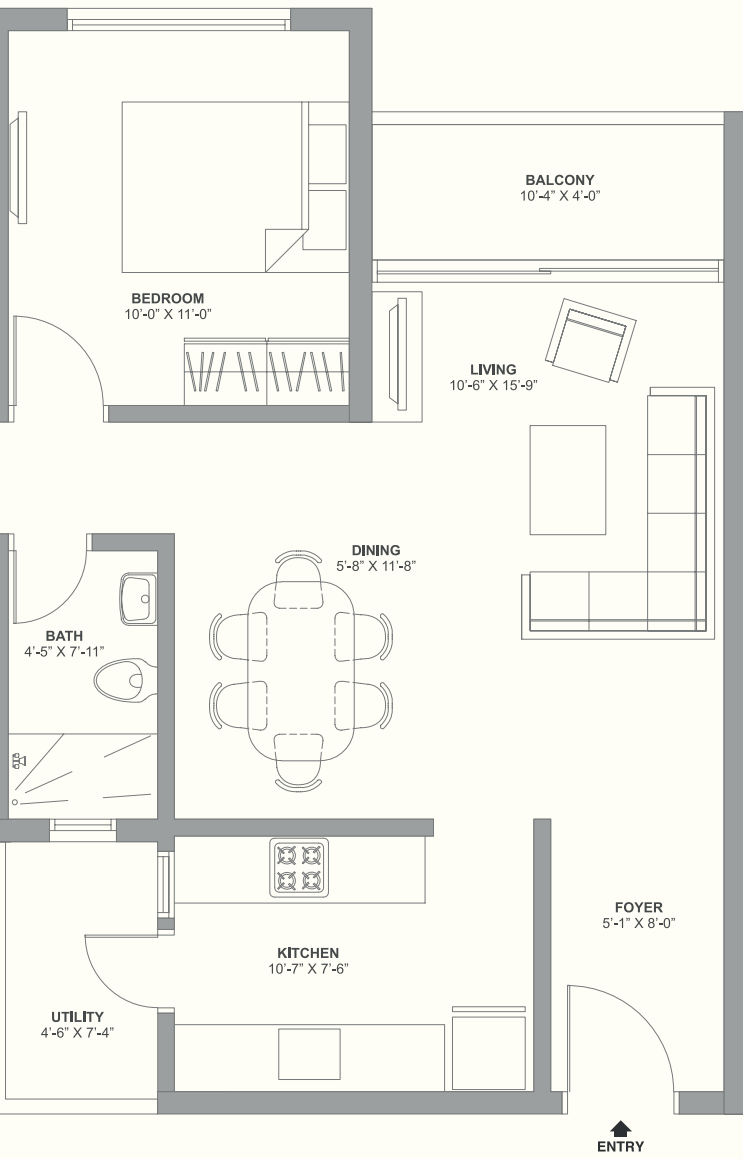
Area: 1239 Sq.ft.  
Unit Type A



Area: 1241 Sq.ft.  
Unit Type B1



Area: 1276 Sq.ft.  
Unit Type B2





# Specifications

## GENERAL:

- Grand entrance lobby
- Two elevators for residential use and one for commercial usage
- Secured card access entry into the elevator
- CCTV cameras in lift lobbies
- 2' x 2' polished tiles in staircases and lift lobby

## ROOMS:

- 2' x 2' polished homogenous tile flooring in living rooms and bedrooms
- Laminated wooden flooring in Master bedroom
- Premium quality satin finish emulsion paint on internal walls
- White powder coated and Reflective glazing windows
- Kapur Timber, Nyatoh solid panel, Varnish finish doors
- AC in Living/Dining, Master bedroom and Kid's bedroom

## BATHROOMS / TOILETS:

- 1' x 1' Anti-skid Vitrified tile flooring
- Vitrified tile up to ceiling height
- Superior quality CP fitting & fixtures
- Concealed plumbing
- Bathtub in Master bath
- 25 litre geyser in Master bathroom and 15 litre geyser in another bath
- Toughened glass Shower screen partitioning

## ELECTRICAL FITTINGS:

- Legrand type Modular switches
- Sufficient points in all rooms
- Concealed copper wiring
- Cable TV and telephone points in living room and Master bedroom
- Provision for power backup in common areas

## KITCHEN:

- 2' x 2' polished homogenous tile flooring
- Kitchen Cabinet with cooking range, hook and sink of a signature brand
- Modular Switches / Sockets
- Satin Finish Emulsion Paint on walls
- Kitchen stage wall dado of 2' x 2' polished vitrified tile
- Exhaust fan

## BALCONIES:

- 1' x 1' homogeneous tile flooring
- Tempered Glass, Natural polished SS Railing

## SECURITY:

- Premium brand main entrance door lock
- Burglar alarm
- Door phone

## PARKING:

- Two-Wheeler Parking Space

